



■ AC Plug Type

AC plug type	2 pin Euro	2 pin USA	2 Pin China	3 pin UK	2 pin AU	2 pin JP	2 pin KR	2 pin IN	3 pin South Africa	Interchangeable
Shape No.	EU	US	CN	UK	AU	JP	KR	IN	/	yes

Insulation Class	Class I	Class I	Class II
AC inlet type	3 pole IEC320-C6	3 pole IEC320-C14	2 pole IEC320-C8
Shape No.	KRE050MPS-C6	KRE050MPS-C14	KRE050MPS-C8

■ Features

- Universal AC input Full range
- **IEC60601/EN60601/UL60601 Medical Grade**
- 2 pole US, EU, AU/NZ, EK, JP, CN, IN and 3 pole UK plug, Class II power unit
- No load power consumption < 0.1W
- **Medical 2 x MOPP**
- Energy efficiency Level VI
- Comply with EISA 2007 / DoE and NRCan
- Protections: Short circuit / Overload / Over voltage
- Fully enclosed plastic case
- Wide range working temperature

■ Applications

- Medical electronic devices
- Telecommunication devices
- Office facilities
- Industrial & Medical equipment



■ Description

KRE050MPS is a highly reliable, 50.4W wall-mounted, interchangeable and desktop styles single-output industrial & Medical adaptor series. This product is a class II power unit (no FG), and class I power unit (with FG) equipped with standard AC power plug, adopting the input range from 90VAC to 264VAC. The entire medical series supplies different models with output voltages ranging between 9VDC and 48VDC, 0 to 5.0A that can satisfy the demands for various types of medical electronic devices.

■ Characteristics

Input:

AC Input Voltage Rating

100 to 240VAC

AC Input Voltage Range

90 to 264VAC

AC Input Frequency

47 to 63Hz

Input Current

0.66A (RMS) maximum at 120VAC 0.25A (RMS) maximum at 240VAC

Touch Current

10uA maximum Medical grade

Inrush Current (Cold Start at ambient 25° C)

30A for 120VAC at maximum load

60A for 240VAC at maximum load

Input Power Saving

0.1W maximum at no load

Output: Efficiency

Meet energy saving efficiency level VI.

Hold-up Time

10mS minimum at 120VAC and maximum load

Short-Circuit Protection

Auto restart

Environmental Temperature

Operation 0 to +40° C

Non-operation -40 to +85° C

Humidity 10-90% non-condensing

Emissions

Complies with FCC Class B Complies with EN55011 Class B

ESD Immunity ±8kV contact / ±15kV air

Immunity

AN/NZS CISPR22

EN55011

EN60601-1-11 Level EN61000-4-3 Level

EN61000-4-4 Level EN61000-4-5 Level

EN61000-4-6 Level EN61000-4-8 Level

EN61000-4-11 Level EN61000-3-2 Level

EN61000-3-3 Level GB9254+GB1762

Dielectric Withstand (Hi-pot) Test Primary to Secondary:

2 x MOPP (4560VACx2)

3500V AC for 1 min., 10mA

Primary to F.G.: 1500V AC for 1 min., 10mA

DC Output Connector

2.1 x 5.5mm Center Positive+ Standard or equivalent,

Or see *KRE-connectors-Spec.pdf*

Output Cable

1.5 meter (4.92 feet), UL2468, from 24-18AWG guage or equivalent

Mating Connector

Equivalent

Model list and Output Specifications

OUTPUT	Voltage(DC)	9V	9.1-14V	14.1-21V	21.1-30V	30.1-48V
	Current (Max.)	5A	4.16A	3.36A	2.3A	1.57A
	Power (Max.)	45	50	50.4	50.4	50.4
	Ripple&noise	≤150 mV	≤200 mV	≤200 mV	≤300 mV	≤300 mV
	Voltage tolerance	±5%				
	Standby power	< 0.21 W				
INPUT	Voltage Range	100-240VAC				
	Frequency	50-60Hz				
ENVIROMEN T	Operation Temp.	0°C to +40°C				
	Storage Temp.	-20°C to +80°C				
	Operation HUM	10%-90%				
SAFETY	Safety Standards	60601 CB,cULus,FCC, CE, TUV Mark, AU plug report				
	MTBF	>50,000 hours at 80%load and 25°C				
Other	Dimension	US/EU: 84.0X52.5X32.0mm UK: 84.0X52.5X38.5mm AU: 84.0X54.5X40.0mm				

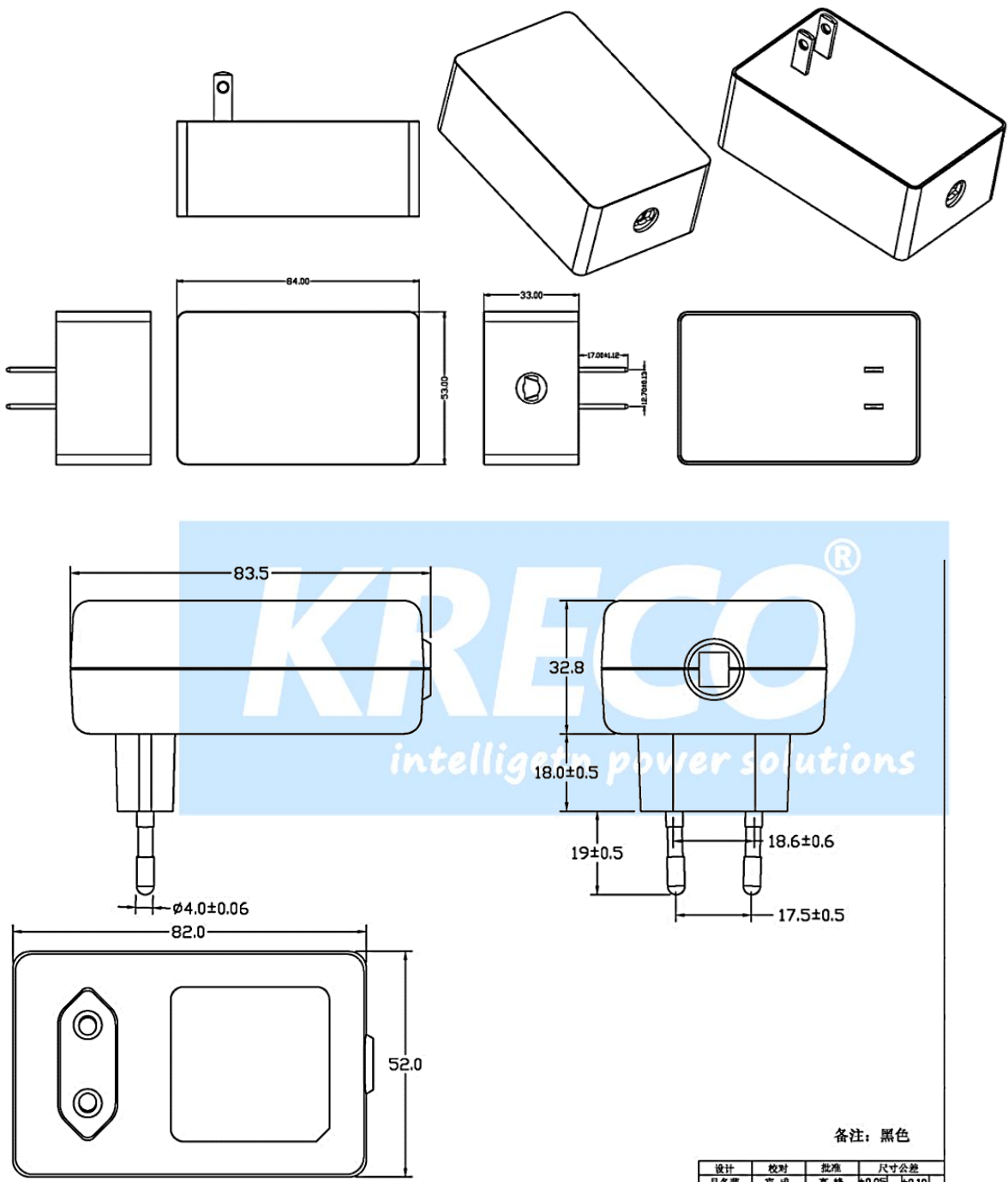
Other	Dimension	84.5X52.0X35.0mmm
-------	-----------	-------------------

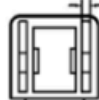
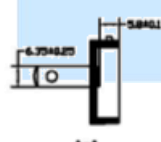
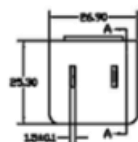
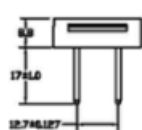
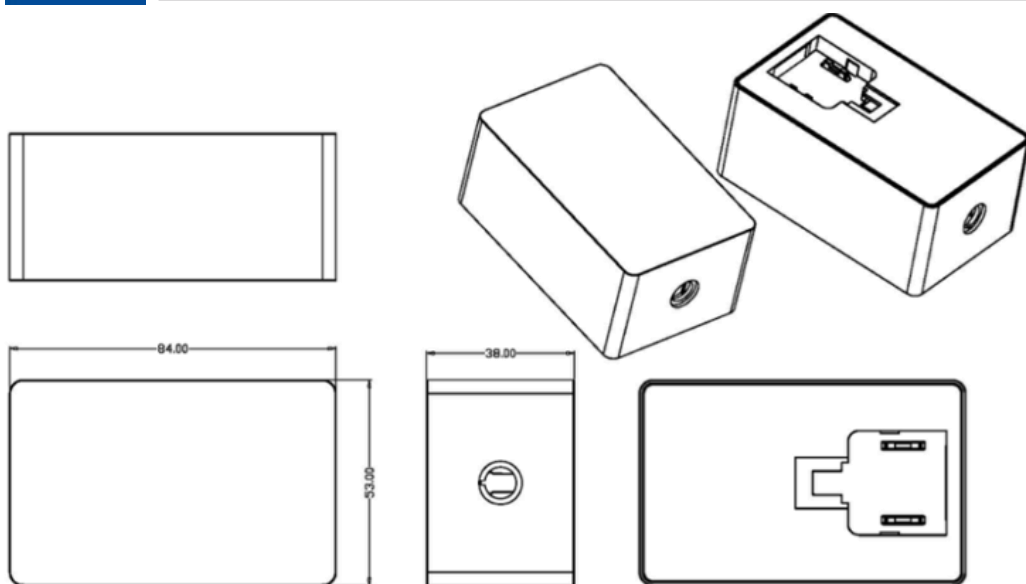
Other	Dimension	97.5X52.5X32.0mmm
-------	-----------	-------------------



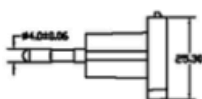
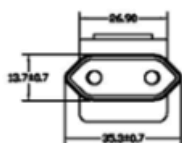
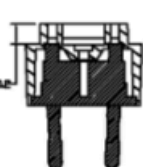
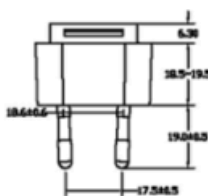
Dimension Diagram for KRE050MPS

Unit: mm

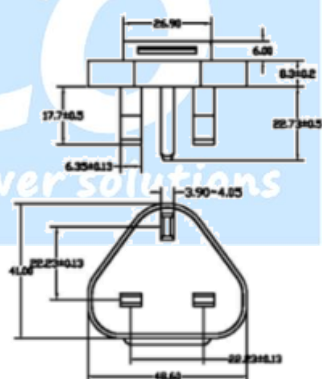




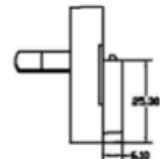
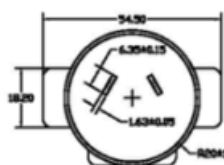
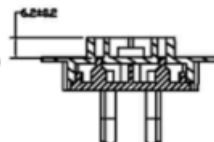
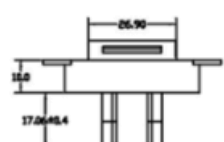
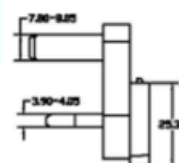
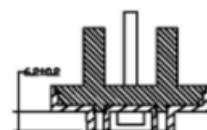
UL PIN



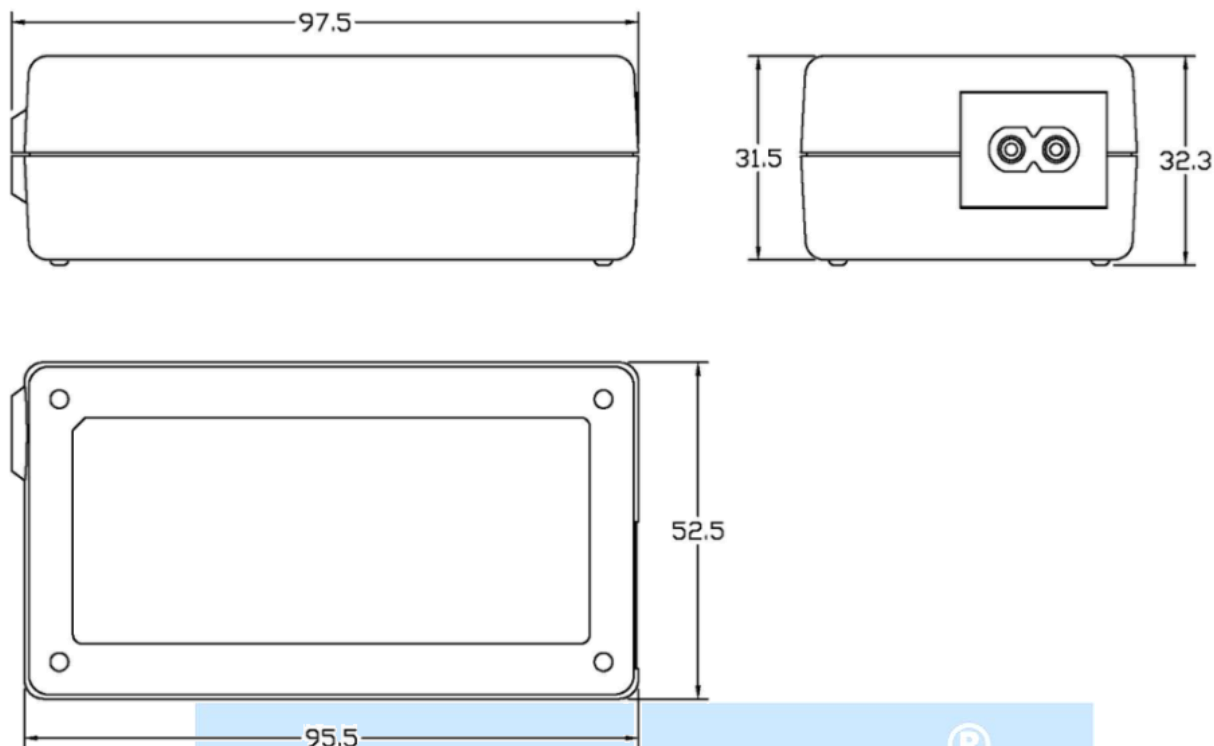
VDE PIN



BS PIN(两铜一塑插脚带钢针)



SAA PIN



KRECO[®]
intelligent power solutions

- (1) I for Interchangeable version, normally include EU, UK, US, AU version plugs, more plug type could be re-designed, or added to production order.
- (2) xxx for Output voltage and yyyy for output current, what you are going to order, please must specify to sales.
- (3) Safety model number differs from the order number, part number, and shape number as per respective OEM/ODM factories.

Kreco is not responsible for any error, and reserves the right to make changes without notice. Please visit our website at www.kreco.com.cn for the most up-to-date specifications and contact information.